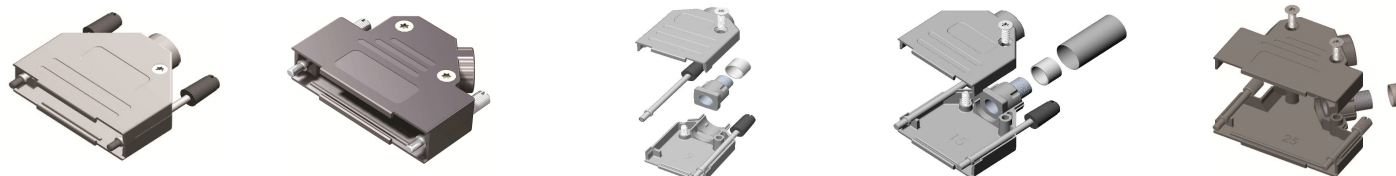




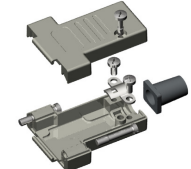
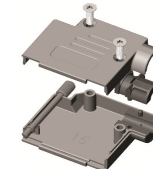
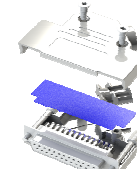
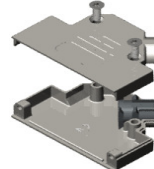
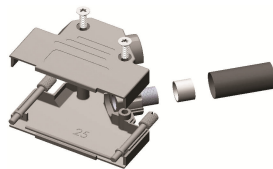
D-SUB SHIELDED HOODS



<i>SERIES</i>	DTZK	DVZK	DTZK-GZA	DTZK-CZAK	DVZK-GZA
SHELL SIZES	9, 15, 25 & 37	9, 15, 25, 37 & 50	9, 15, 25 & 37	9, 15, 25 & 37	9, 15, 25 & 37
STANDARD MATERIAL	Zink	Zink	Zink	Zink	Zink
<i>CONNECTOR APPLICATIONS</i>					
SUB-D SOLDER CONNECTOR	Yes	Yes	Yes	Yes	Yes
SUB-D CRIMP CONNECTOR	Yes	Yes	Yes	Yes	Yes
SUB-D MIXED LAYOUT CONNECTOR	Yes	Yes	Yes	Yes	Yes
SUB-D FLAT CABLE IDC CONNECTOR	No	No	No	No	No
<i>CABLE APPLICATIONS</i>					
ROUND CABLE	Yes	Yes	Yes	Yes	Yes
FLAT ROUND CABLE	Yes	Yes	Yes	Yes	Yes
FLAT CABLE	No	No	No	No	No
<i>FEATURES</i>					
UL COMPLIANCE	V-0	V-0	V-0	V-0	V-0
ROHS 2002/95/EC COMPLIANCE	Yes	Yes	Yes	Yes	Yes
WEEE 2002/96/EC COMPLIANCE	Yes	Yes	Yes	Yes	Yes
TERMINATION	Shield clamp	Shield clamp	Shield crimp	Shield crimp	Shield crimp
CABLE OUTLET	180 degree	180 degree	45 degree	90 degree	45 degree
CABLE BOOT	No	No	No	No	No
<i>LOCKING DEVICES</i>					
LONG JACKSCREWS	Yes	Yes	Yes	Yes	Yes
SLIDE LOCK	No	No	No	No	No
SHORT LOCKING SCREWS	No	No	No	No	No



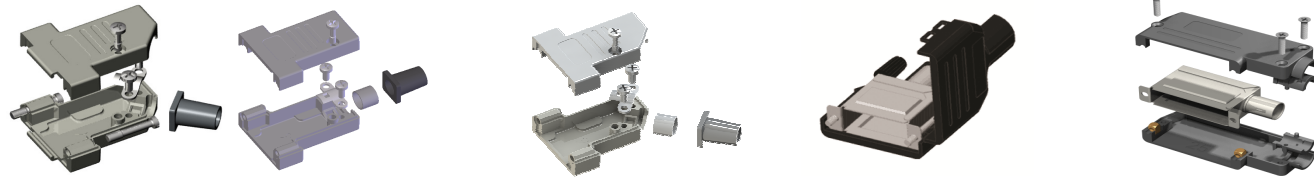
D-SUB SHIELDED HOODS



<i>SERIES</i>	DVZK-CZAK	DVZK-SL	DVZK-W	DSZK	DMTZK
SHELL SIZES	9, 15, 25 & 37	9, 15, 25 & 37	9, 15, 25 & 37	9 & 15	9
STANDARD MATERIAL	Zink	Zink	Zink	Zink	Zink
<i>CONNECTOR APPLICATIONS</i>					
SUB-D SOLDER CONNECTOR	Yes	Yes	Yes	Yes	Yes
SUB-D CRIMP CONNECTOR	Yes	Yes	Yes	Yes	Yes
SUB-D MIXED LAYOUT CONNECTOR	Yes	Yes	Yes	Yes	Yes
SUB-D FLAT CABLE IDC CONNECTOR	No	No	No	No	No
<i>CABLE APPLICATIONS</i>					
ROUND CABLE	Yes	Yes	Yes	Yes	Yes
FLAT ROUND CABLE	Yes	Yes	Yes	Yes	Yes
FLAT CABLE	No	No	No	No	No
<i>FEATURES</i>					
UL COMPLIANCE	V-0	V-0	V-0	V-0	V-0
ROHS 2002/95/EC COMPLIANCE	Yes	Yes	Yes	Yes	Yes
WEEE 2002/96/EC COMPLIANCE	Yes	Yes	Yes	Yes	Yes
TERMINATION	Shield crimp	Shield clamp	Shield clamp	Shield clamp	Shield clamp
CABLE OUTLET	45 degree	45 degree	45 degree	90 degree	180 degree
CABLE BOOT	No	No	No	No	Accessory
<i>LOCKING DEVICES</i>					
LONG JACKSCREWS	Yes	No	Yes	Yes	Yes
SLIDE LOCK	No	Yes	No	No	No
SHORT LOCKING SCREWS	No	No	No	No	Yes



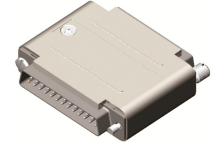
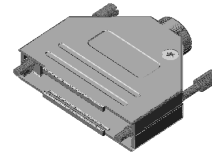
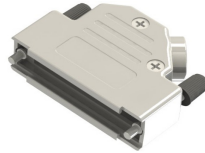
D-SUB SHIELDED HOODS



<i>SERIES</i>	DMVZK	DMTZK-SL	DMVZK-SL	DTK	DSK-SL
SHELL SIZES	9	9	9 & 15	9, 15, 25 & 37	9, 15, 25 & 37
STANDARD MATERIAL	Zink	Zink	Zink	PC (Nylon 15-way)	Polycarbonat
<i>CONNECTOR APPLICATIONS</i>					
SUB-D SOLDER CONNECTOR	Yes	Yes	Yes	Yes	Yes
SUB-D CRIMP CONNECTOR	Yes	Yes	Yes	Yes	Yes
SUB-D MIXED LAYOUT CONNECTOR	Yes	Yes	Yes	Yes	Yes
SUB-D FLAT CABLE IDC CONNECTOR	No	No	No	Yes	Yes
<i>CABLE APPLICATIONS</i>					
ROUND CABLE	Yes	Yes	Yes	Yes	Yes
FLAT ROUND CABLE	Yes	Yes	Yes	Yes	Yes
FLAT CABLE	No	No	No	No	No
<i>FEATURES</i>					
UL COMPLIANCE	V-0	V-0	V-0	V-0 (V-2 15-way)	V-0
ROHS 2002/95/EC COMPLIANCE	Yes	Yes	Yes	Yes	Yes
WEEE 2002/96/EC COMPLIANCE	Yes	Yes	Yes	Yes	Yes
TERMINATION	Shield clamp	Shield clamp	Shield clamp	Shield crimp	Shield crimp
CABLE OUTLET	45 degree	180 degree	45 degree	180 degree	90 degree
CABLE BOOT	Accessory	Accessory	Accessory	No	No
<i>LOCKING DEVICES</i>					
LONG JACKSCREWS	Yes	No	No	Yes	No
SLIDE LOCK	No	Yes	Yes	No	Yes
SHORT LOCKING SCREWS	Yes	No	No	No	No



D-SUB SHIELDED HOODS



<i>SERIES</i>	DTPMK	DVPMK	DTNMK	DVNMK	DAPMK
SHELL SIZES	9, 15, 25 & 37	9, 15, 25 & 37	9, 15, 25 & 37	9, 15, 25, 37 & 50	15 & 25
STANDARD MATERIAL	Metallized ABS-plastic	Metallized ABS-plastic	Non-magnetic materials	Non-magnetiv materials	Metallized ABS-plastic
<i>CONNECTOR APPLICATIONS</i>					
SUB-D SOLDER CONNECTOR	Yes	Yes	Yes	Yes	Yes
SUB-D CRIMP CONNECTOR	Yes	Yes	Yes	Yes	Yes
SUB-D MIXED LAYOUT CONNECTOR	Yes	Yes	Yes	Yes	Yes
SUB-D FLAT CABLE IDC CONNECTOR	Yes	Yes	Yes	Yes	Yes
<i>CABLE APPLICATIONS</i>					
ROUND CABLE	Yes	Yes	Yes	Yes	Yes
FLAT ROUND CABLE	Yes	Yes	Yes	Yes	Yes
FLAT CABLE	No	No	No	No	Yes
<i>FEATURES</i>					
UL COMPLIANCE	V-0	V-0	V-0	V-0	V-0
ROHS 2002/95/EC COMPLIANCE	Yes	Yes	Yes	Yes	Yes
WEEE 2002/96/EC COMPLIANCE	Yes	Yes	Yes	Yes	Yes
TERMINATION	Shield clamp	Shield clamp	Shield clamp	Shield clamp	Backshell integrated
CABLE OUTLET	180 degree	45 degree	180 degree	45 degree	Adapter
CABLE BOOT	No	No	No	No	No
<i>LOCKING DEVICES</i>					
LONG JACKSCREWS	Yes	Yes	Yes	Yes	Yes
SLIDE LOCK	No	No	No	No	No
SHORT LOCKING SCREWS	No	No	No	No	Yes