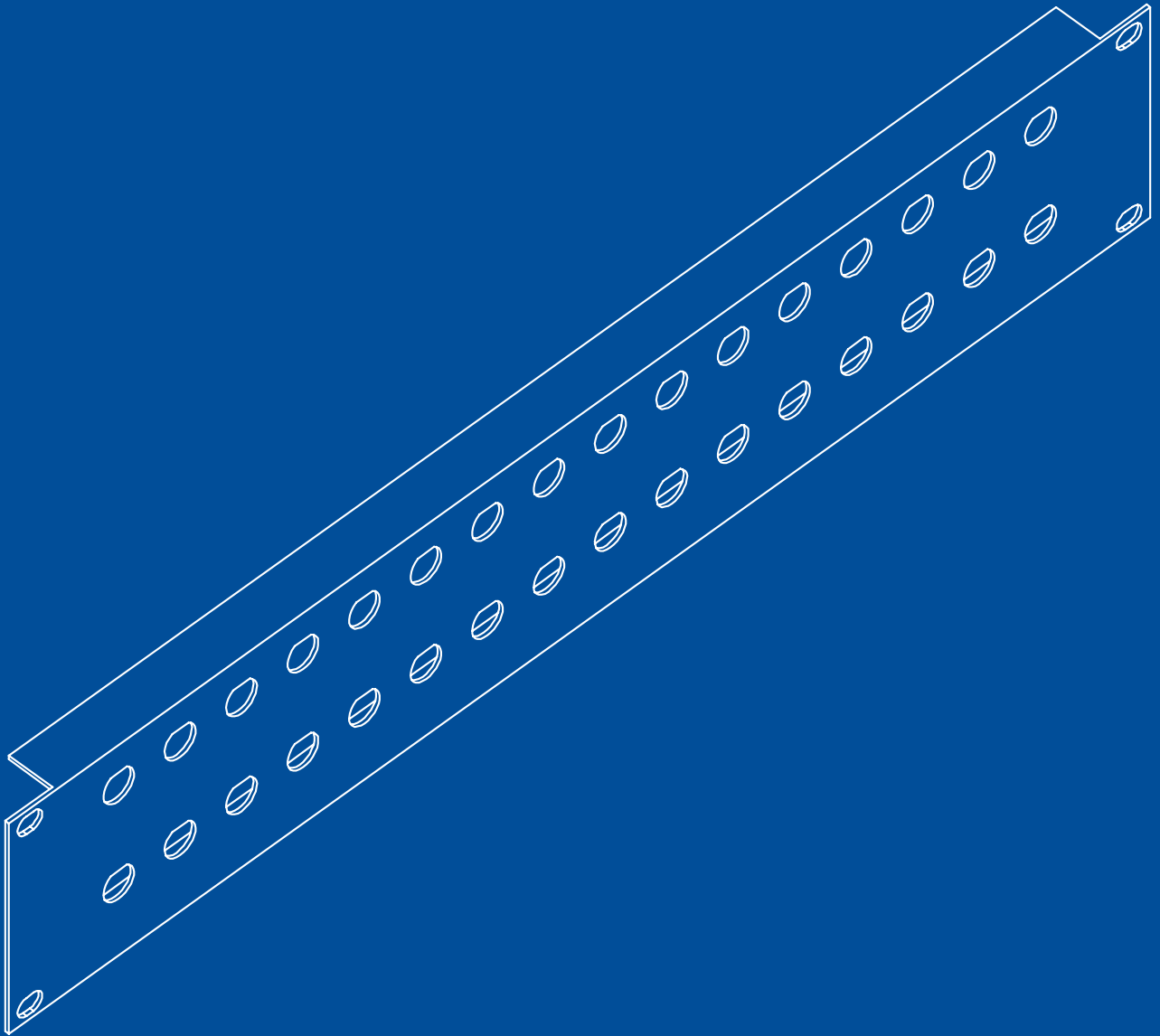


# 19" PATCH PANELS



**OSSI®: CONNECT TO EXCELLENCE**

19" PATCH PANELS CATALOGUE / EDITION 04

**OSSI®**  
**CONNECTORS**  
CONNECTORS, PARTS AND  
EXCELLENCE SINCE 1974





## Supply and Service

Ossi Connectors A/S® is a leading supplier in design and manufacturing of I/O interconnect products for the electronics, datacom, telecom, medical and industrial market sectors. Our vast experience of designing standard and custom design solutions positions us as the provider for your interconnection applications.

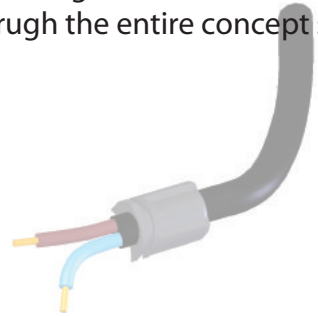


## Benefits

Through design capability, high quality and short lead times, our products are distributed by efficient network of distributors and we also co-operate with key accounts for special requirements. Ossi Connectors A/S® is represented in more than 25 countries and our distribution network is constantly growing.



## Capability



The fully automatic assembly and packaging machines with our experienced employees assure the quality standards and support our production processes. The manufacturing resources include design, prototypes and manufacturing of standard and custom designed products. The engineering department supports our clients through the entire concept stage from idea to serial production.

### Address

Ossi Connectors A/S  
Anker Jorgensens Vej 2  
DK - 4930 Maribo  
Denmark

### Contact

Tel	+45 5478 2888
E-mail	<a href="mailto:info@ossi.dk">info@ossi.dk</a>
Web	<a href="http://www.ossi.dk">www.ossi.dk</a>



# 19" PATCH PANELS

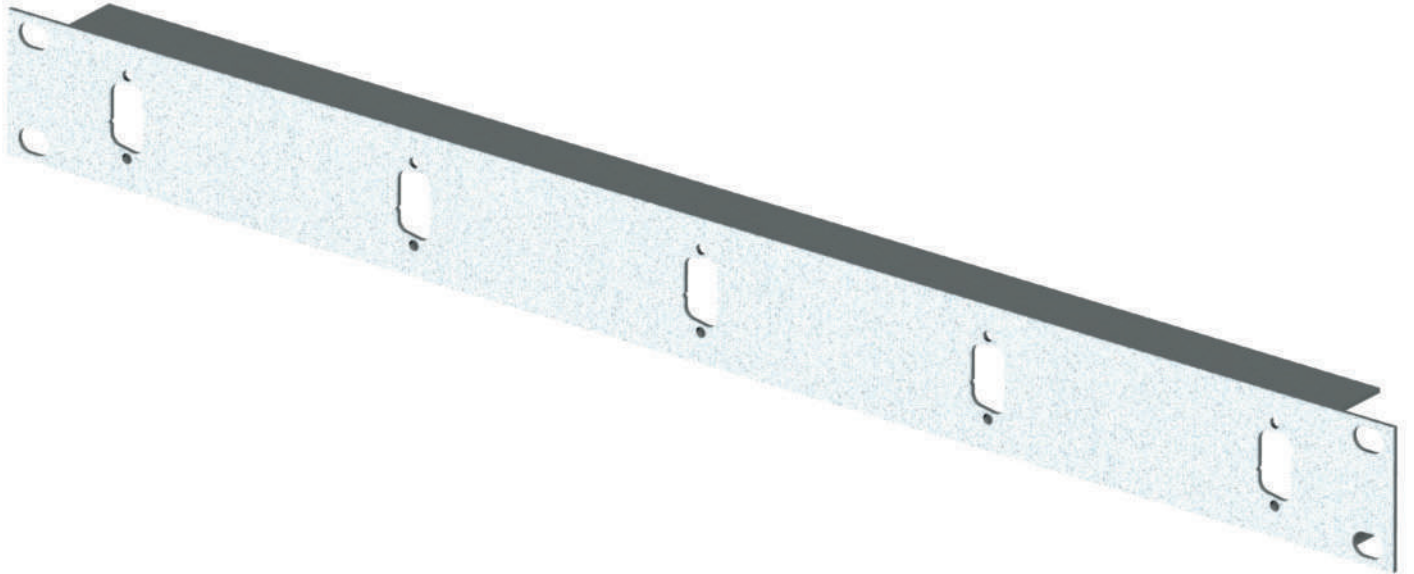
KK1A SERIES	6
KK1A PANEL VERSIONS	7
KK1P SERIES	8
KK1P PANEL VERSIONS	9
KK1.5A SERIES	10
KK1.5A PANEL VERSIONS	11
KK2A SERIES	12
KK2A PANEL VERSIONS	13
KK2P SERIES	14
KK2P PANEL VERSIONS	15
SIG-S IDENTIFICATION SYSTEM	16

# 19" Patch Panels 1 HU KK1A Series

## TECHNICAL SPECIFICATIONS

Material:	Extruded aluminium
Finish:	Anodised according E6 or painted RAL-colour
Dimension:	1 HU = 44.0 mm

See separate page for different connector cut-outs available



## PART NUMBERING SYSTEM

KK1A - 16 - SUB-D9 - RAL7032

Series: \_\_\_\_\_  
KK1A  
Number of connector cut-outs: \_\_\_\_\_  
See separate list  
Connector: \_\_\_\_\_  
See separate list  
Colour: \_\_\_\_\_

Omit = Anodised according E6

RAL = Indicate painting according RAL7032

## FEATURES

- Light weight and cost effective
- Panel measures only 1.6 mm to fit any available snap-in connector
- Different connector styles can be configured on each panel
- For custom designed solutions, please consult factory
- Can be delivered with printed logotype and panel marking upon request

# KK1A Panel Versions (1HU)

Connector	Number of cut-outs
Sub-D9	8 10 12 16 20
Sub-D15	8 10 12 16 20
BNC-BU (8.9 X 9.7 mm)	8 10 12 16 20
BNC-IN (12.0 X 12.9 mm)	8 10 12 16 20
Twinax	8
DIN-Audio	8 10 12 16
XLR	8 10 12 16
RJ11 - 45 (12.9 X 14.8 mm)	8 10 12 16
RJ11 - 45 (12.9 X 15.5 mm)	8 10 12 16
RJ11 - 45 (14.8 X 20.1 mm)	8 10 12 16
RJ11 - 45 (14.8 X 20.6 mm)	8 10 12 16
RJ11 - 45 (20.3 X 20.3 mm)	8 10 12 16
F-SMA (7.0 X 7.5 mm)	8 10 12 16 20
SC	8 10 12 16 20
SC-Duplex	8 10 12 16
ST (7.8 X 9.6 mm)	8 10 12 16
ST-Duplex	8 10 12 16
D-11	Blank panel
SIG-S	Identification label strip

*Consult factory when ordering:*

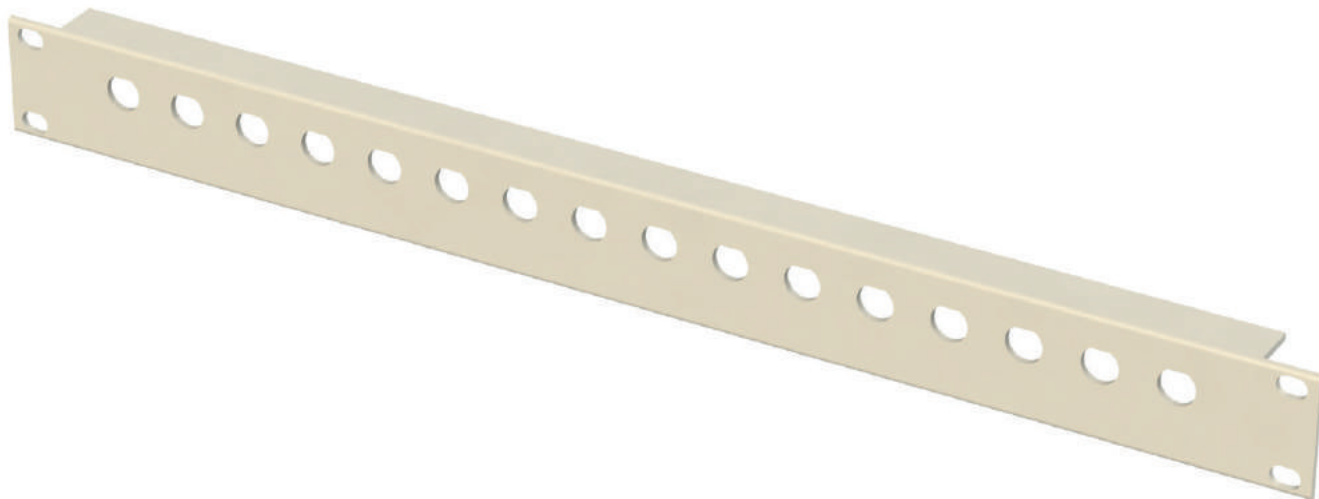
- Printed and or painted panels for layout and part number
- Other configurations of connector cut-outs than listed above

# 19" Patch Panels 1 HU KK1P Series

## TECHNICAL SPECIFICATIONS

Material:	2.5 mm extruded polymer profile (PS)
Colour:	Grey, 4103 GY 30
Dimension:	1 HU = 44.0 mm

See separate page for different connector cut-outs available



## PART NUMBERING SYSTEM

KK1P - 16 - BNC-IN

Series: \_\_\_\_\_  
KK1P  
Number of connector cut-outs: \_\_\_\_\_  
See separate list  
Connector: \_\_\_\_\_  
See separate list

## FEATURES

- Light weight and cost effective
- Panel measures only 2.5 mm
- Different connector styles can be configured on each panel
- For custom designed solutions, please consult factory
- Can be delivered with identification label strip upon request



# KK1P Panel Versions (1HU)

Connector	Number of cut-outs
Sub-D9	8 10 12 16 20
Sub-D15	8 10 12 16 20
BNC-BU (8.9 X 9.7 mm)	8 10 12 16 20
BNC-IN (12.0 X 12.9 mm)	8 10 12 16 20
Twinax	8
DIN-Audio	8 10 12 16
XLR	8 10 12 16
RJ11 - 45 (12.9 X 14.8 mm)	8 10 12 16
RJ11 - 45 (12.9 X 15.5 mm)	8 10 12 16
RJ11 - 45 (14.8 X 20.1 mm)	8 10 12 16
RJ11 - 45 (14.8 X 20.6 mm)	8 10 12 16
RJ11 - 45 (20.3 X 20.3 mm)	8 10 12 16
F-SMA (7.0 X 7.5 mm)	8 10 12 16 20
SC	8 10 12 16 20
SC-Duplex	8 10 12 16
ST (7.8 X 9.6 mm)	8 10 12 16
ST-Duplex	8 10 12 16
D-11	Blank panel
SIG-S	Identification label strip

*Consult factory when ordering:*

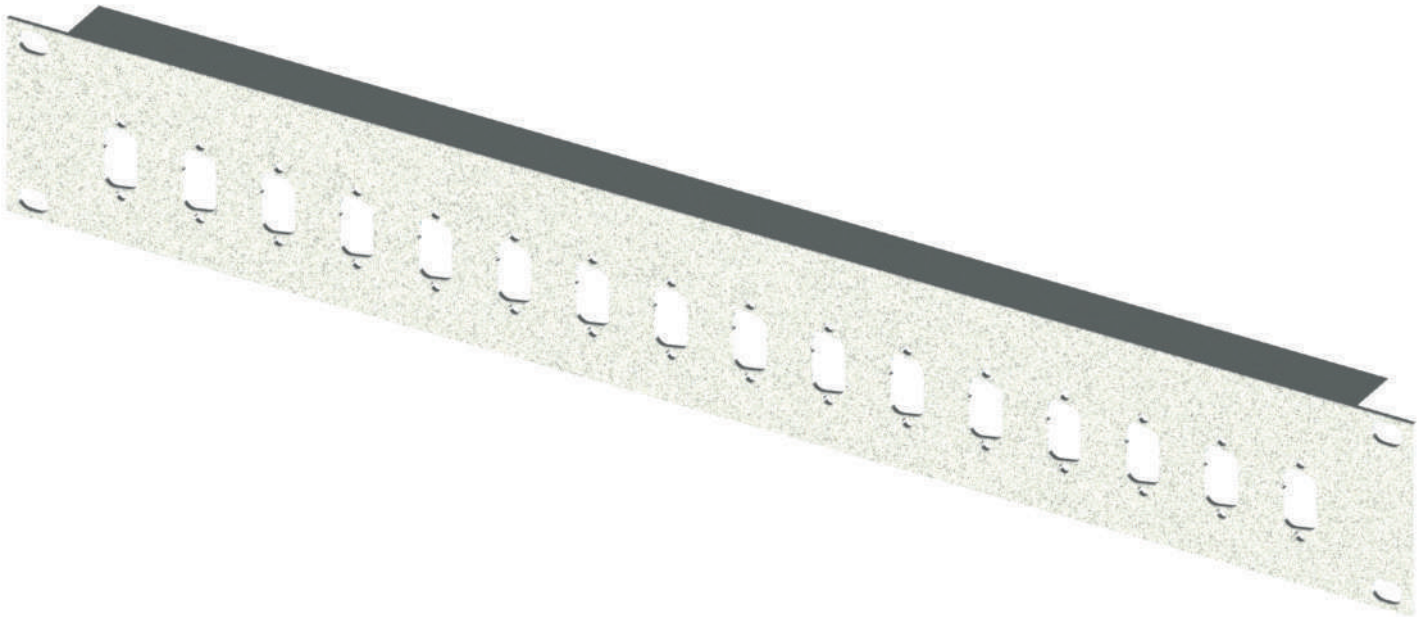
*- Panels with other configurations of connector cut-outs than listed above*

# 19" Patch Panels 1.5 HU KK1.5A Series

## TECHNICAL SPECIFICATIONS

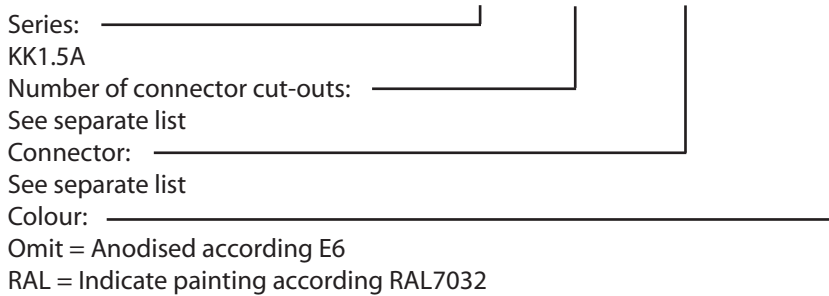
Material:	Extruded aluminium
Finish:	Anodised according E6 or painted RAL-colour
Dimension:	1.5 HU = 66.0 mm

See separate page for different connector cut-outs available



## PART NUMBERING SYSTEM

KK1.5A - 16 - SUB-D9 - RAL7032



## FEATURES

- Light weight and cost effective
- Panel measures only 1.6 mm to fit any available snap-in connector
- Different connector styles can be configured on each panel
- For custom designed solutions, please consult factory
- Can be delivered with printed logotype and panel marking upon request

# KK1.5A Panel Versions (1.5 HU)

Connector	Number of cut-outs
Sub-D9	8 10 12 16 20
Sub-D15	8 10 12 16 20
BNC-BU (8.9 X 9.7 mm)	8 10 12 16 20
BNC-IN (12.0 X 12.9 mm)	8 10 12 16 20
Twinax	8
DIN-Audio	8 10 12 16
XLR	8 10 12 16
RJ11 - 45 (12.9 X 14.8 mm)	8 10 12 16
RJ11 - 45 (12.9 X 15.5 mm)	8 10 12 16
RJ11 - 45 (14.8 X 20.1 mm)	8 10 12 16
RJ11 - 45 (14.8 X 20.6 mm)	8 10 12 16
RJ11 - 45 (20.3 X 20.3 mm)	8 10 12 16
F-SMA (7.0 X 7.5 mm)	8 10 12 16 20
SC	8 10 12 16 20
SC-Duplex	8 10 12 16
ST (7.8 X 9.6 mm)	8 10 12 16
ST-Duplex	8 10 12 16
D-11	Blank panel
SIG-S	Identification label strip

*Consult factory when ordering:*

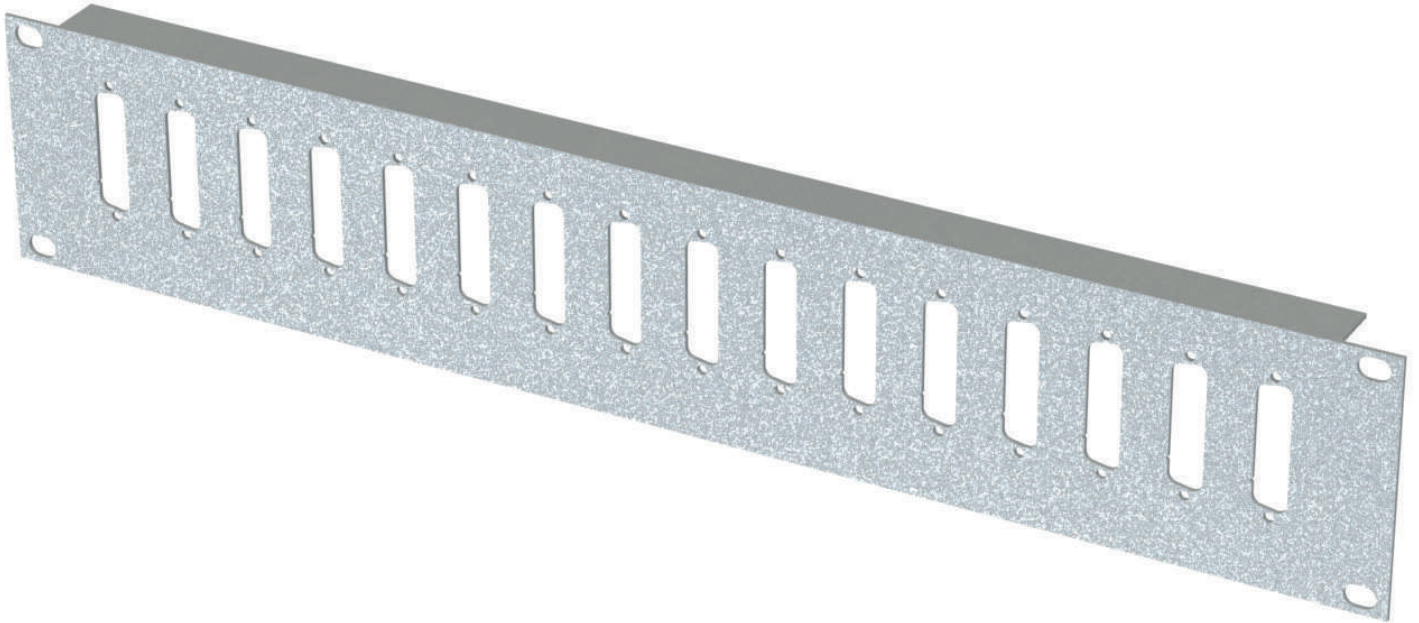
- Printed and or painted panels for layout and part number
- Other configurations of connector cut-outs than listed above

# 19" Patch Panels 2 HU KK2A Series

## TECHNICAL SPECIFICATIONS

Material:	Extruded aluminium
Finish:	Anodised according E6 or painted RAL-colour
Dimension:	2 HU = 88.0 mm

See separate page for different connector cut-outs available



## PART NUMBERING SYSTEM

KK2A - 32 - SUB-D9 - RAL7032

Series: _____	_____	_____	_____
KK2A			
Number of connector cut-outs: _____	_____	_____	_____
See separate list			
Connector: _____	_____	_____	_____
See separate list			
Colour: _____	_____	_____	_____
Omit = Anodised according E6			
RAL = Indicate painting according RAL7032			

## FEATURES

- Light weight and cost effective
- Panel measures only 1.6 mm to fit any available snap-in connector
- Different connector styles can be configured on each panel
- For custom designed solutions, please consult factory
- Can be delivered with printed logotype and panel marking upon request

# KK2A Panel Versions (2 HU)

Connector	Number of cut-outs
Sub-D9	8 10 12 16 20
Sub-D15	8 10 12 16 20
Sub-D25	8 10 12 16 20
Sub-D37	8 10 12 16 20
Sub-D50	8 10 12 16 20
BNC-BU (8.9 X 9.7 mm)	8 10 12 16 20 24 32
BNC-IN (12.0 X 12.9 mm)	8 10 12 16 20 24 32
Twinax	8 10 12 16
DIN-Audio	8 10 12 16 20 24 32
XLR	8 10 12 16 20 24 32
RJ11 - 45 (12.9 X 14.8 mm)	8 10 12 16 20 24 32
RJ11 - 45 (12.9 X 15.5 mm)	8 10 12 16 20 24 32
RJ11 - 45 (14.8 X 20.1 mm)	8 10 12 16 20 24 32
RJ11 - 45 (14.8 X 20.6 mm)	8 10 12 16 20 24 32
RJ11 - 45 (20.3 X 20.3 mm)	8 10 12 16 20 24 32
F-SMA (7.0 X 7.5 mm)	18 20 24 32 40
SC	18 20 24 32 40
SC-Duplex	18 20 24
ST (7.8 X 9.6 mm)	18 20 24 32
ST-Duplex	18 20 24
D-11	Blank panel
SIG-S	Identification label strip

Consult factory when ordering:

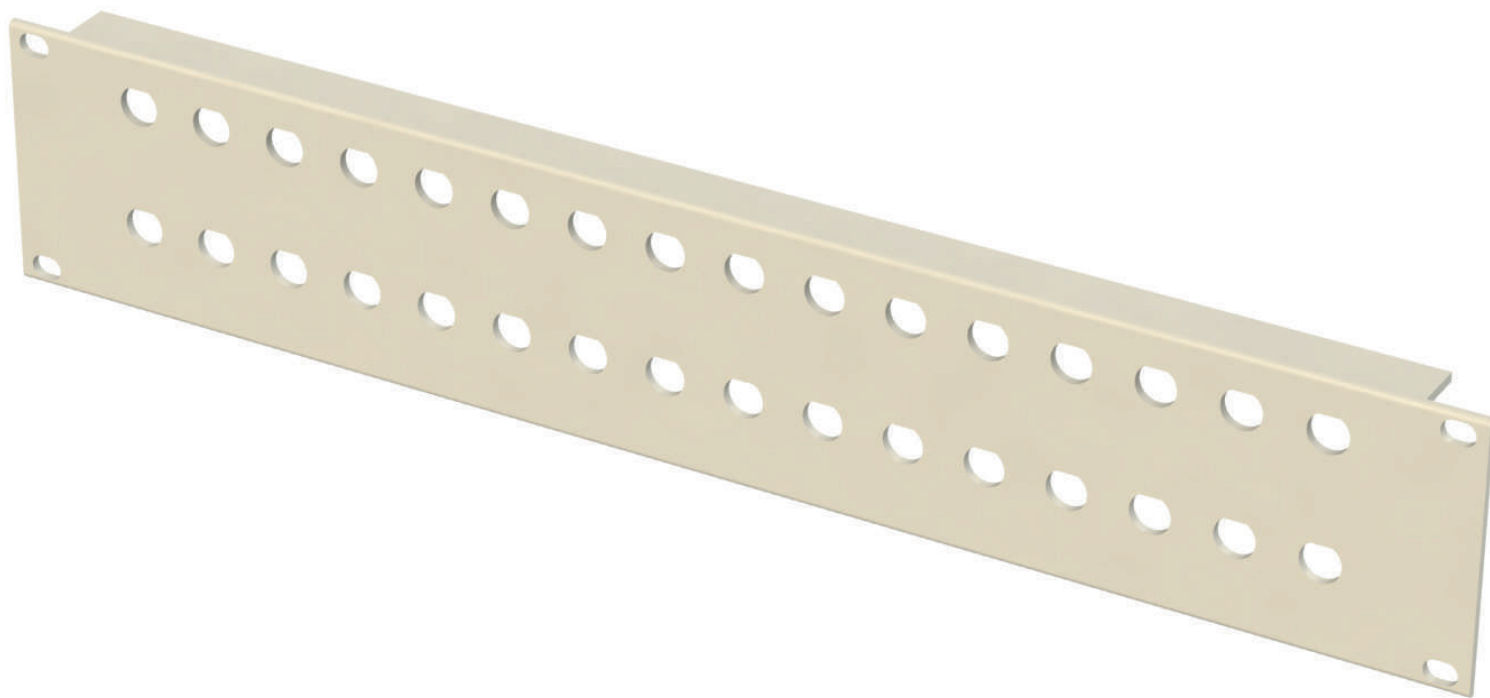
- Printed and or painted panels for layout and part number
- Other configurations of connector cut-outs than listed above

# 19" Patch Panels 2 HU KK2P Series

## TECHNICAL SPECIFICATIONS

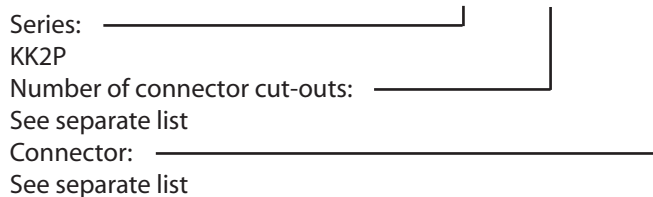
Material:	2.5 mm extruded polymer profile (PS)
Colour:	Grey, 4103 GY 30
Dimension:	2 HU = 88.0 mm

See separate page for different connector cut-outs available



## PART NUMBERING SYSTEM

KK2P - 32 - BNC-BU



## FEATURES

- Light weight and cost effective
- Panel measures only 2.5 mm
- Different connector styles can be configured on each panel
- For custom designed solutions, please consult factory
- Can be delivered with identification label strip upon request

# KK2P Panel Versions (2 HU)

Connector	Number of cut-outs
Sub-D9	8 10 12 16 20
Sub-D15	8 10 12 16 20
Sub-D25	8 10 12 16 20
BNC-BU (8.9 X 9.7 mm)	8 10 12 16 20 24 32
BNC-IN (12.0 X 12.9 mm)	8 10 12 16 20 24 32
Twinax	8 10 12 16
DIN-Audio	8 10 12 16 20 24 32
XLR	8 10 12 16 20 24 32
D-11	Blank panel
SIG-S	Identification label strip

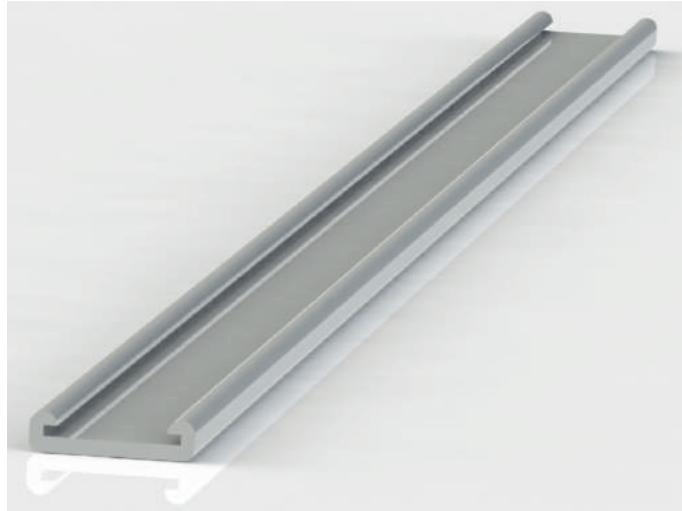
*Consult factory when ordering:*

*- Panels with other configurations of connector cut-outs than listed above*

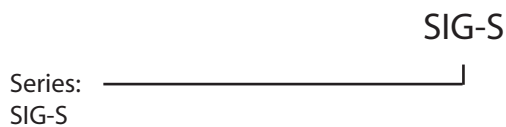
# SIG-S Patch Panels Accessory

## TECHNICAL SPECIFICATIONS

Material:	Extruded aluminium
Finish:	Anodised according to E6
Dimensions:	430 mm long and 15 mm wide



## PART NUMBERING SYSTEM



## FEATURES

- Extruded aluminium with anodised surface
- Each SIG-S is supplied with paper and plastic strip for marking connector cut-outs
- Delivered as an accessory for KK1A, KK1P, KK1,5A, KK2A and KK2P
- For one row panels is one SIG-S needed, for two row panels is two SIG-S needed
- When ordering 19" patch panels, SIG-S can be assembled from factory



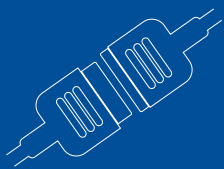




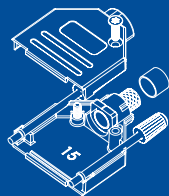


# CONNECT TO OSSI

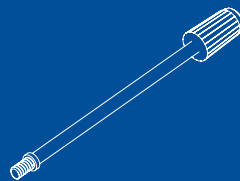
DISCOVER OUR PRODUCTS, SERVICES AND  
ONLINE CATALOGUES AT [WWW.OSSI.DK](http://WWW.OSSI.DK)



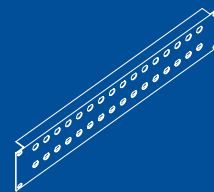
MAIN  
CATALOGUE



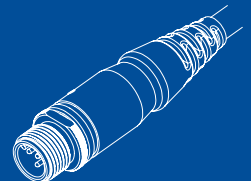
D-SUB  
BACKSHELLS



D-SUB  
ACCESSORIES



19" PATCH  
PANELS



M12 CIRCULAR  
CONNECTORS

**OSSI**<sup>®</sup>  
CONNECTORS  
CONNECTORS, PARTS AND  
EXCELLENCE SINCE 1974

OSSI CONNECTORS A/S  
ANKER JØRGENSENS VEJ 2  
DK-4930 MARIBO  
DENMARK  
WEB: [WWW.OSSI.DK](http://WWW.OSSI.DK)  
TEL: +45 54 78 28 88  
E-MAIL: [INFO@OSSI.DK](mailto:INFO@OSSI.DK)

ALL RIGHTS RESERVED ©1974-2018 OSSI CONNECTORS A/S. OSSI<sup>®</sup> IS A REGISTERED TRADEMARK. LAND DESIGNLAB FOR OSSI CONNECTORS 10.18>